



## Adriano Adewale Catapluf's Musical Journey

**Sunday 31 May | 3pm**  
**Running time: approximately 50 minutes**  
**£8 all tickets**

Commissioned by the EFG London Jazz Festival, Catapluf's Musical Journey is a fabulous new work by multi-instrumentalist Adriano Adewale. Catapluf is a fabulous character whose imagination travels to places where everything is music: saucepans; water; drums and even his body! This great round the world musical adventure features musicians Jenny Adejayan on cello, Marcelo Andrade and Giuliano Pereira both on saxophone, flute and guitar, Andres Ticino on percussion and Adriano Adewale on saucepans and everything else!

**Suitable for 5-7 years and their families**

'One of the best shows for children I've ever seen'

Umea Jazz Festival

## MUSIC WORKSHOP with Adriano Adewale

**Sunday 31 May | 11am**  
**£4 all tickets**

A participatory workshop for children and their parents using wonderful percussion instruments from around the world and your kitchen!



## Little Angel Theatre Exhibition

Wallner Gallery | Free

An exhibition featuring designs, puppets, and elements of theatre sets selected from just a few of Little Angel Theatre's considerable back catalogue of magical productions for children and families. Established in 1961, the theatre and its workshop are based in Islington, where all the puppets and props are hand-made. In addition to enjoying these lovely objects on display there will be an opportunity to make some finger puppets of your own to take away and create your own productions.

**Suitable for all**



## Wheee! FREE\* Family Weekend in the Park!

**Saturday 30 May, 12noon - 5pm**  
Release your creative streak! Join in our free artist and park ranger-led arts, crafts and bushcraft activities at make and do stations across the park.

**Sunday 31 May, 12noon - 5pm**  
Look out for the Nerdy Birds, Meet the Dinosaur, crazy Lift performances and drumming workshops in the amphitheatre throughout the afternoon together with even more opportunities to make, to do and to take away all sorts of creative arts and crafts.

See our website for full details at the beginning of May

\*Luminarium charges apply



## How to get here and finding your way around

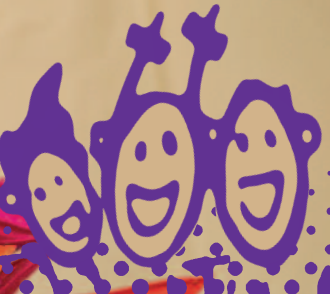
Nottingham Lakeside Arts is located at the South Entrance of The University of Nottingham's University Park Campus, just off the A6005, University Boulevard, about 2.5 miles from the City Centre.

For directions and public transport information, please visit our website [Lakesidearts.org.uk](http://Lakesidearts.org.uk)

**Nottingham Lakeside Arts**  
**University Park**  
**Nottingham**  
**NG7 2RD**

**Box Office: 0115 846 7777**

NOTTINGHAM  
**LAKE  
SIDE  
ARTS**



# Wheee!

**LAKE SIDE'S INTERNATIONAL CHILDREN'S  
THEATRE AND DANCE FESTIVAL**  
**MONDAY 25 - SUNDAY 31 MAY**

[lakesidearts.org.uk](http://lakesidearts.org.uk)  
**0115 846 7777**

[/LakesideArts](https://www.facebook.com/LakesideArts)

[@LakesideArts](https://www.instagram.com/LakesideArts) #Wheee15

The University of Nottingham  
UNITED KINGDOM • CHINA • MALAYSIA

**Nevski Propsekt (Belgium)**  
**in association with Moko Dance**

## HOP

**Friday 29 May | 1pm and 4pm**  
**Running time: 45mins (no interval)**  
**Djanogly Theatre | £7.50 all tickets**

Mr Dedalus and his son Icarus are trapped on an island. They long for home, but there's no way to get off. Luckily Mr Dedalus is a clever inventor, and he creates an ingenious plan to fly away, and hop high above the sea. Hop tells of a dream of flying, of never giving up and above all, the special relationship between a father and a son.

**Suitable for 4+**

**Make sure you arrive 15 minutes before the show time, when your journey with the company will begin.**



## Family Dance Workshops

**FREE TO HOP  
TICKET HOLDERS!**

**11.30am - 12.15pm**  
**2.45pm - 3.30pm**

Open to family groups (ratio of at least one adult accompanying no more than 2 children), these workshops will explore Hop-related dance ideas in a fun session for children and their adults alike.

**Suitable 4+ and families**





# Wheee! is back!

Our eagerly awaited festival of theatre and dance for children returns over half term. With shows in the theatre, a brand new luminarium and our ever popular Free Family Weekend in the park, you and the little ones will be entertained and amazed.

We've packed as much as we can into the next 7 pages, but if you want to find out more contact our Box Office on 0115 846 7777 or ask us on Twitter or Facebook

@LakesideArts /LakesideArts

## Action Transport Theatre STATik

Monday 25 May 3pm  
Running time: 60 minutes  
Djanogly Theatre | £7.50 all tickets

It's Mikey's first day at work in a factory where he prepares radios and tunes them in. But when a rogue signal – the voice of a child – is mysteriously picked up, the regimented routine and order starts to disappear and a hilarious descent into chaos begins... Expect lots of energetic clowning, visual comedy and vibrant soundtrack in this wordless story of a world where one person simply can't and won't fit in.

Suitable for 5+ years and families

An East Midlands Children's Theatre & Dance Network tour



## Architects of Air Arboria

Monday 25 – Sunday 31 May | 11am – 5.15pm (last admission)  
Highfields Park | £3.50 all tickets  
Child-free session: Thursday 28 May 5.30 – 7.30pm

Wheee! is proud to host the World Premiere of Arboria.

Nottingham-based, but internationally renowned, Architects of Air produce monumental structures with interiors of extraordinary beauty, luminosity and iridescence which must be experienced to be believed. This is something which everyone can appreciate and enjoy, and which instils a sense of wonder in everyone who passes through the airlock.

Visits at peak times: 15 minutes.  
Suitable for all but please note that under 16 year olds should be accompanied by an adult.

Wheelchair accessible, carers attend free. Parents/carers of visitors with autism please let us know at the ticket sales point.

www.architects-of-air.com

## NEW IN 2015

It's now possible to book and pay for specific timeslot tickets in advance online or at the box office. Limited numbers available.

## Dybwikdans Toddler's Room

Tuesday 26, Wednesday 27 May | 10am, 10.30am, 11am, 1pm, 1.30pm, 2pm  
Running time: 20 minutes | Djanogly Theatre | £5 all tickets

This beautiful piece of mini dance theatre from Norway has been created by choreographer Siri Dybwik to appeal to our youngest audiences. Set inside a white dome the children and their carers will immediately become involved in a play without words where gorgeous sculptural objects, sounds, and beautiful costumes are the stimulus for a truly magical experience.

Suitable for 0-3 years and their carers (up to 2 per child).  
Very limited availability – book early to avoid disappointment.

## Shamal (North Wind)

Friday 29 May | 7pm | Arboria – Highfields Park  
Running time: 18 minutes followed by Q&A with the artists | Free but booking required

Shamal is a music, art, and digital-film collaboration created by visual artist Rachel Gadsden in partnership with composer Claire McCue and filmmaker Abigail Norris, performed by Rachel and cellist Lesley Shrigley Jones. The epic desert landscape and the Shamal wind is a stunning metaphor for exploring the feelings of people making a cultural shift, dealing with the challenge of moving towards different ways of seeing and doing. A unique opportunity to experience this powerful and moving performance prior to its inclusion in National Paralympic Day and Liberty Festival 2015 in London.

www.vimeo.com/112999700  
www.rachelgadsden.com

Suitable for: All



## Dragon Breath Theatre & Papplewick Museum & Heritage Centre A Crack in Time

Wednesday 27, Thursday 28 May | 10am - 3.30pm  
Running time: approximately 5 hours with lunch break  
Papplewick Museum & Heritage Centre | £3.50 all tickets

Bring your own picnic lunch!

Meet a host of great Victorian characters, including Wilf the Boiler Boy, Jenny Sparrow from Broadmarsh, the mysterious Water Guardian, and others who bring this revolutionary pumping station to life. Discover the vital role Papplewick played in 19th-century England, transforming public health at a time when cholera was rife, and life expectancy in some parts of newly-industrialised Nottingham was just 24 years.

This fabulous immersive family experience explores the boiler house, engine room, beautiful grounds, and a magnificent vaulted and empty underground reservoir, and asks us to think about the uses to which we put water around the world today.

Suitable for 8+ years accompanied by an adult

Some areas of site are not wheelchair accessible or suitable for those with walking difficulties. Clothing and footwear must be appropriate for uneven ground, different weather conditions, and access to the underground reservoir.

Supported by Spark Arts for Children

# Wheee!